

Cartografia



MARITTIMO - IT FR - MARITIME
TOSCANA - LIGURIA - SARDEGNA - CORSE

*La Cooperazione al cuore
del Mediterraneo*

Programma di Cooperazione Transfrontaliera

ITALIA – FRANCIA

MARITTIMO 2014 – 2020

Procedura di Valutazione Ambientale Strategica

Ai sensi della Direttiva 42/2001/CE

Allegato B

Cartografia

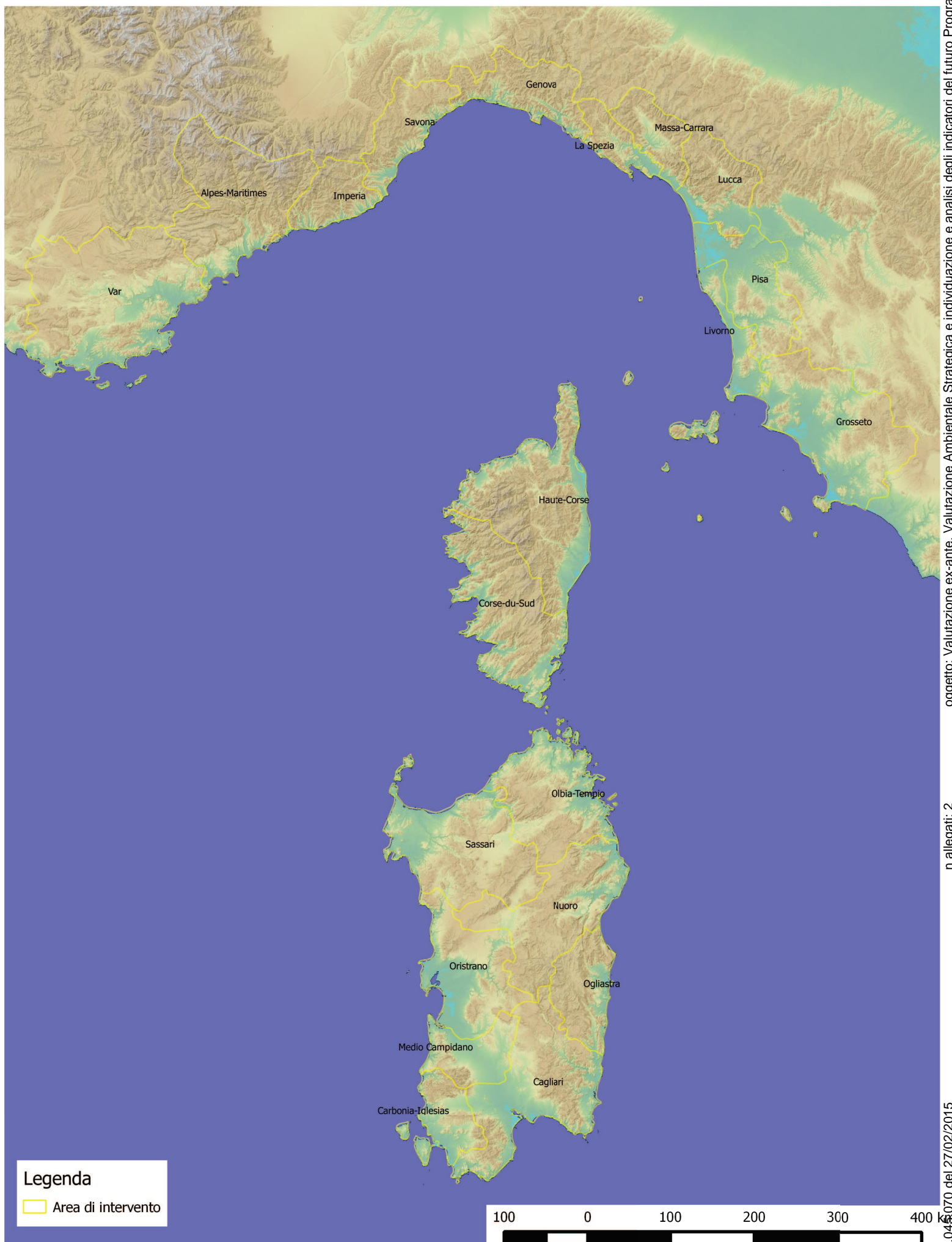
Novembre 2014

A cura di:

RTI RESOLVO SRL - RESCO SOC COOP, AGROTEC SPA (SUBAPPALTO)

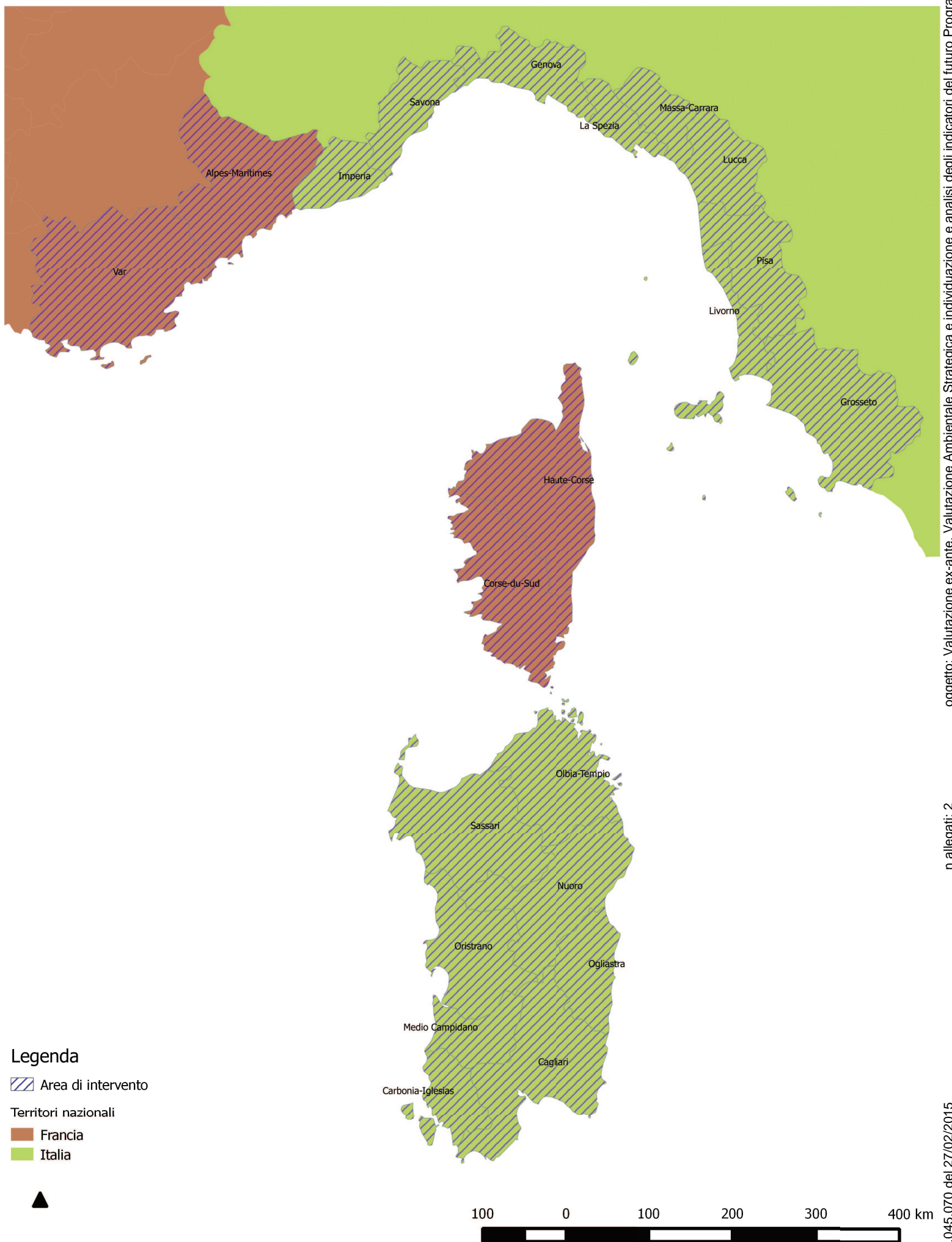
*Regione Toscana,
Settore Attività Internazionali*





Legenda

Area di intervento



Legenda

 Area di intervento

Territori nazionali

 Francia

 Italia



VALUTAZIONE AMBIENTALE STRATEGICA
Programma di cooperazione transfrontaliera Italia – Francia
Marittimo 2014 – 2020

Tavola: Inquadramento territoriale e delimitazione dell'area di studio

oggetto: Valutazione ex-ante, Valutazione Ambientale Strategica e individuazione e analisi degli indicatori del futuro Program
n allegati: 2
A00GRT/49683/F.045.070 del 27/02/2015

1st	2nd	3rd	Description	Criteria*
A	f		Tropical	$T_{hot} \geq 18$
	m		- Rainforest	$P_{dry} \geq 60$
	w		- Monsoon	Not (Af) & $P_{dry} \geq 100 - MAP/25$
B			- Savannah	Not (Af) & $P_{dry} < 100 - MAP/25$
	W		- Desert	$MAP < 5 \times P_{threshold}$
	S		- Steppe	$MAP \geq 5 \times P_{threshold}$
	h		- Hot	$MAT \geq 18$
	k		- Cold	$MAT < 18$
C			Temperate	$T_{hot} > 10$ & $0 < T_{cold} < 18$
	s		- Dry Summer	$P_{dry} < 40$ & $P_{dry} < P_{wet}/3$
	w		- Dry Winter	$P_{dry} < 40$ & $P_{dry} < P_{wet}/3$
			- Without dry season	Not (Cs) or (Cw)
	a		- Hot Summer	$T_{hot} \geq 22$
	b		- Warm Summer	Not (a) & $T_{mon10} \geq 4$
	c		- Cold Summer	Not (a or b) & $1 \leq T_{mon10} < 4$
D			Cold	$T_{hot} > 10$ & $T_{cold} \leq 0$
	s		- Dry Summer	$P_{dry} < 40$ & $P_{dry} < P_{wet}/3$
	w		- Dry Winter	$P_{dry} < 40$ & $P_{dry} < P_{wet}/3$
			- Without dry season	Not (Ds) or (Dw)
	a		- Hot Summer	$T_{hot} \geq 22$
	b		- Warm Summer	Not (a) & $T_{mon10} \geq 4$
	c		- Cold Summer	Not (a, b or d)
	d		- Very Cold Winter	Not (a or b) & $T_{cold} < -38$
E			Polar	$T_{hot} < 10$
	T		- Tundra	$T_{hot} > 0$
	F		- Frost	$T_{hot} \leq 0$

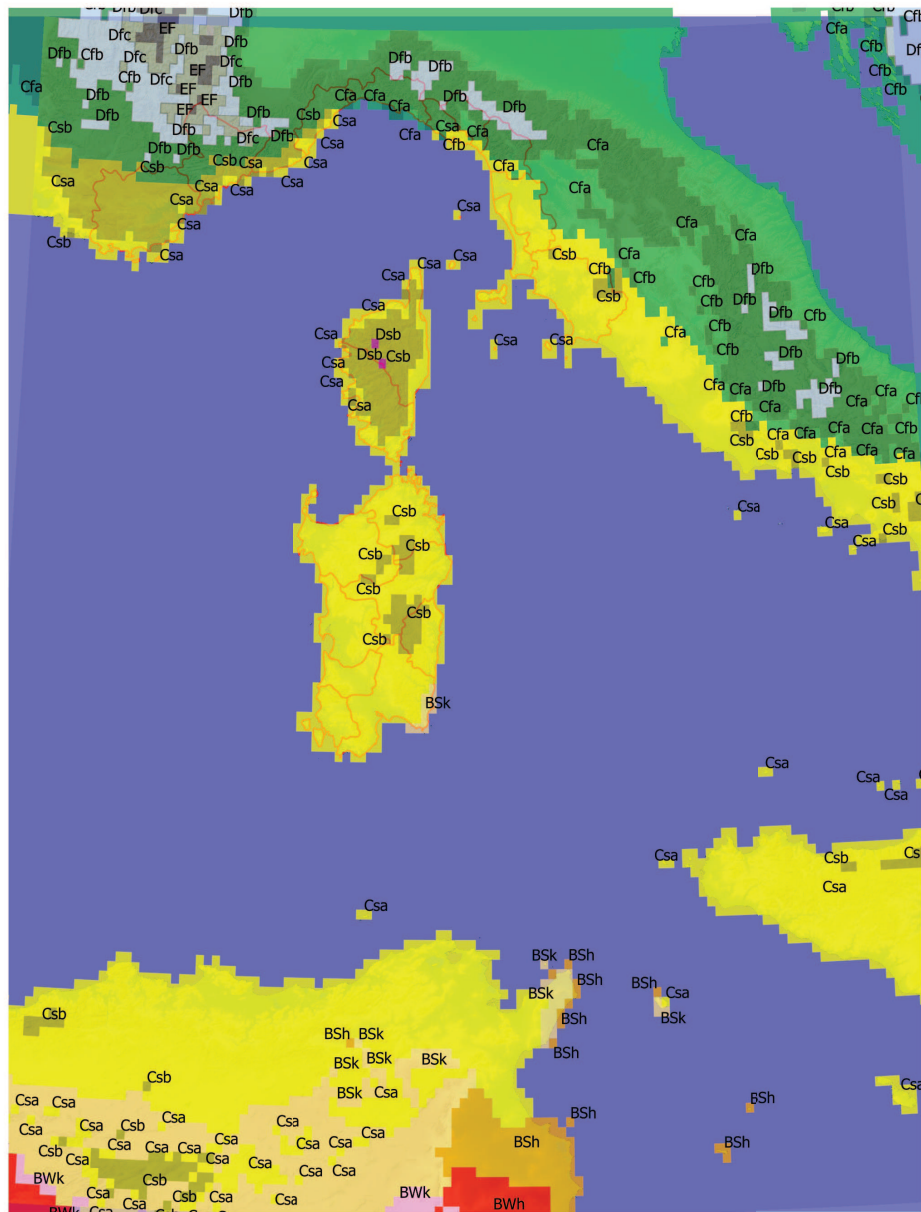
*MAP = mean annual precipitation, MAT = mean annual temperature, T_{hot} = temperature of the hottest month, T_{cold} = temperature of the coldest month, T_{mon10} = number of months where the temperature is above 10, P_{dry} = precipitation of the driest month, P_{wet} = precipitation of the wettest month in summer, P_{wet} = precipitation of the wettest month in winter, $P_{threshold}$ = varies according to the following rules (if 70% of MAP occurs in winter then $P_{threshold} = 2 \times MAT$, if 70% of MAP occurs in summer then $P_{threshold} = 2 \times MAT + 28$, otherwise $P_{threshold} = 2 \times MAT + 14$). Summer (winter) is defined as the warmer (cooler) six month period of ONDJFM and AMJJAS.

Legenda

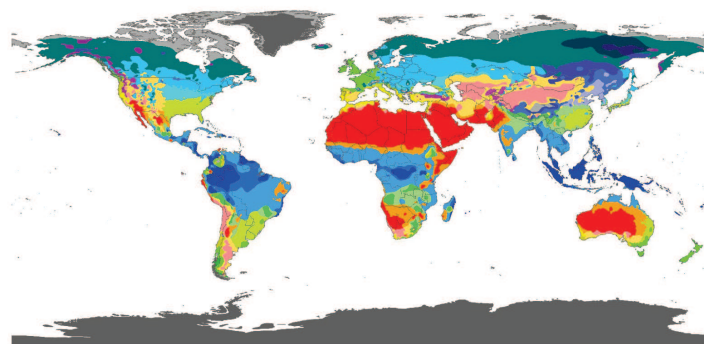
Area di intervento

Köppen climate classification

- equatorial climate (Af)
- monsoon climate (Am)
- tropical savanna climate (Aw)
- warm semi-arid climate (BSh)
- cold semi-arid climate (BSk)
- warm desert climate (BWh)
- cold desert climate (BWk)
- warm oceanic climate/humid subtropical climate (Cfa)
- temperate oceanic climate (Cfb)
- cool oceanic climate (Cfc)
- warm mediterranean climate (Csa)
- temperate mediterranean climate (Csb)
- Warm temperate with dry, cool summer (Csc)
- humid subtropical climate (Cwa)
- humid subtropical climate/subtropical oceanic highland climate (Cwb)
- oceanic subpolar climate (Cwc)
- warm continental climate/humid continental climate (Dfa)
- temperate continental climate/humid continental climate (Dfb)
- cool continental climate/subarctic climate (Dfc)
- cold continental climate/subarctic climate (Dfd)
- warm continental climate/mediterranean continental climate (Dsa)
- temperate continental climate/mediterranean continental climate (Dsb)
- cool continental climate (Dsc)
- cold continental climate (Dsd)
- warm continental climate/humid continental climate (Dwa)
- temperate continental climate/humid continental climate (Dwb)
- cool continental climate/subarctic climate (Dwc)
- cold continental climate/subarctic climate (Dwd)
- tundra climate (EF)
- ice cap climate (ET)



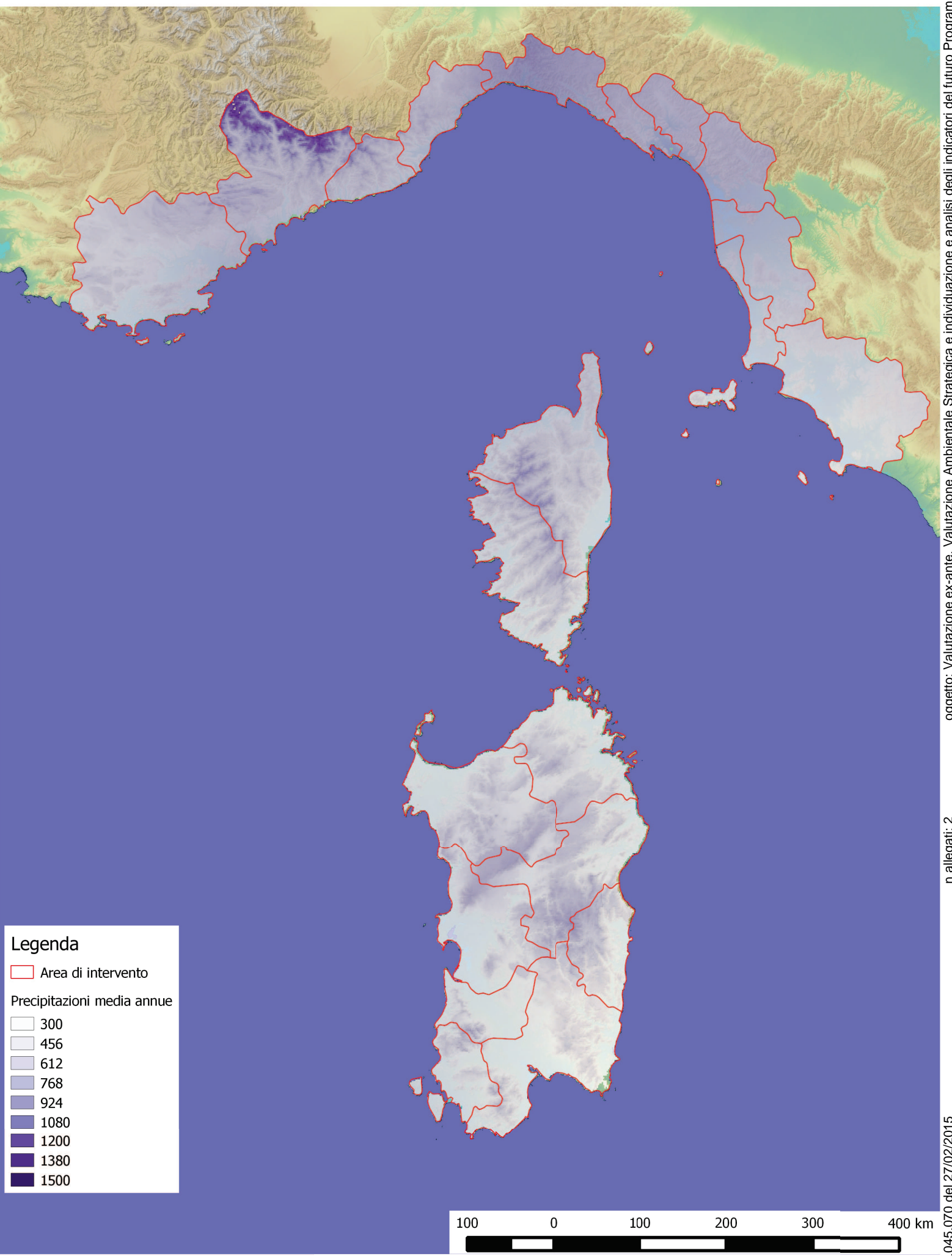
World map of Köppen-Geiger climate classification

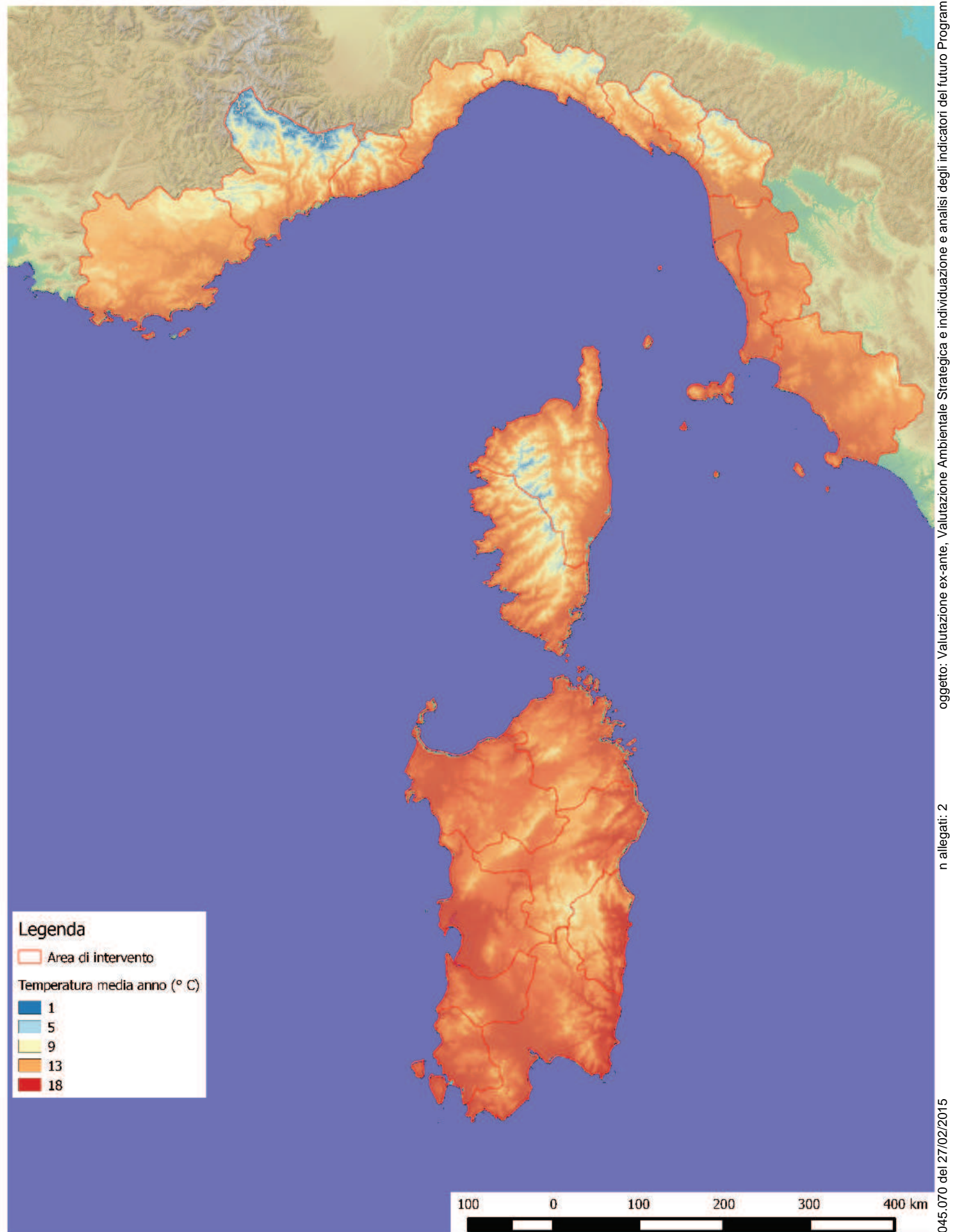


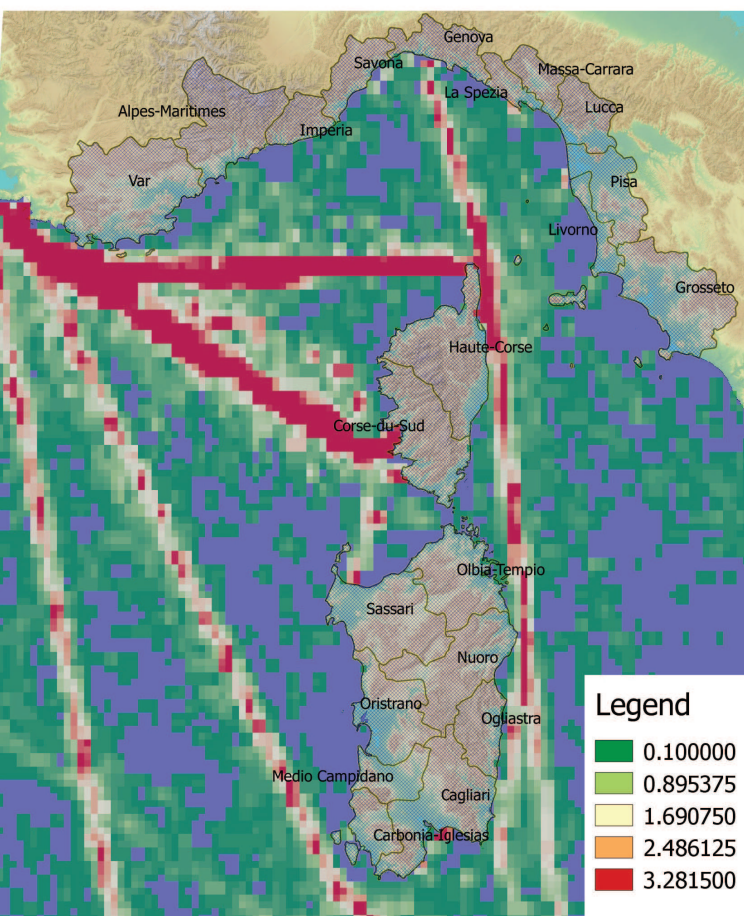
DATA SOURCE : GHCN v2.0 station data
Temperature (N = 4,844) and
Precipitation (N = 12,396)
PERIOD OF RECORD : All available
MIN LENGTH : ≥30 for each month.
RESOLUTION : 0.1 degree latitude

100 0 100 200 300 400 km

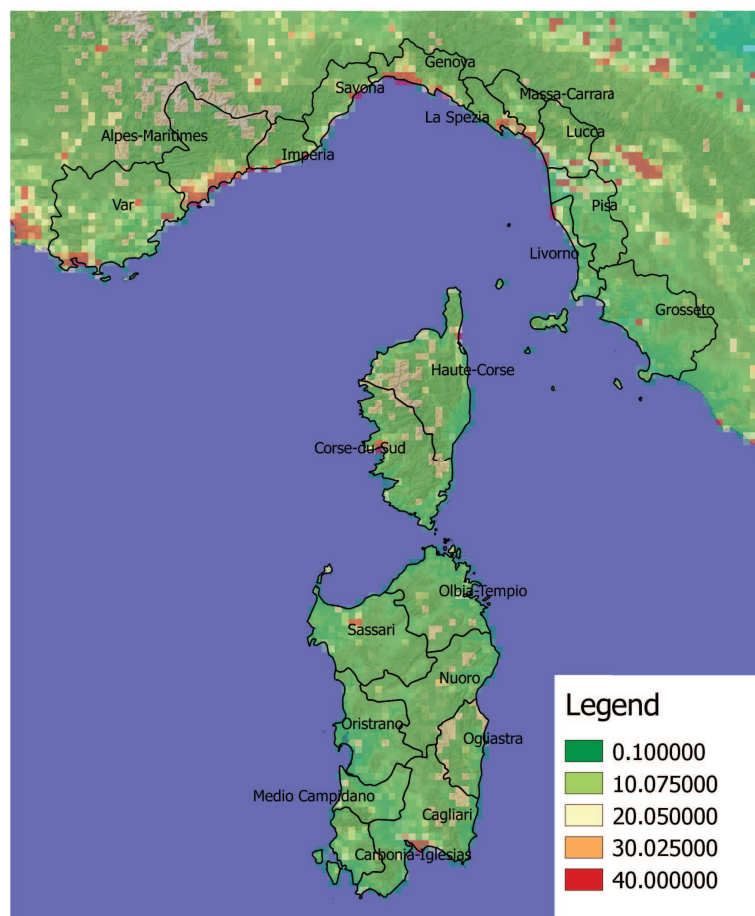




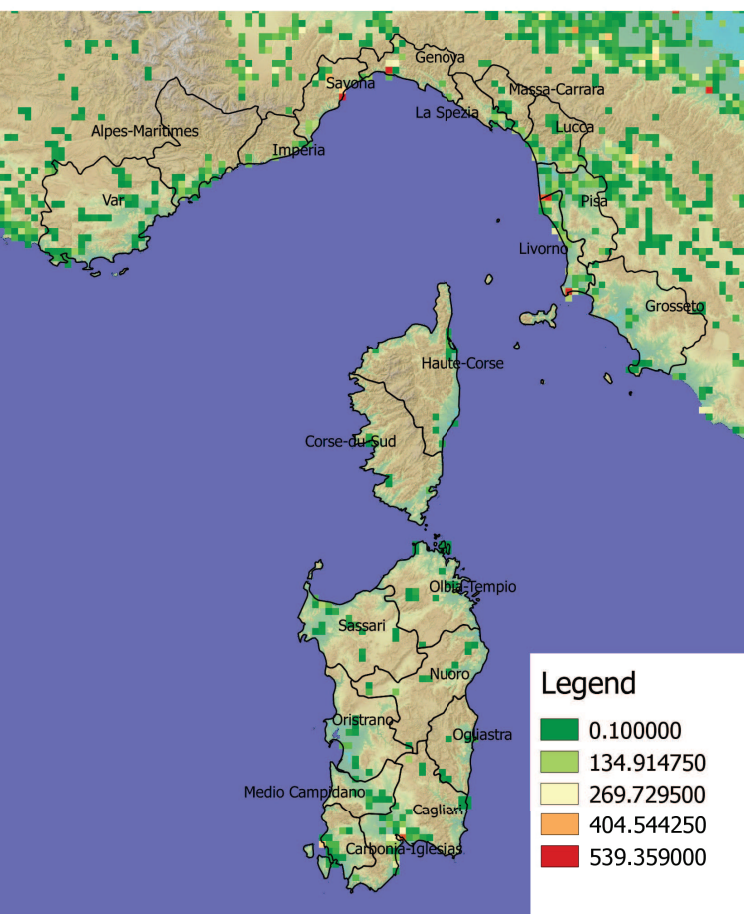




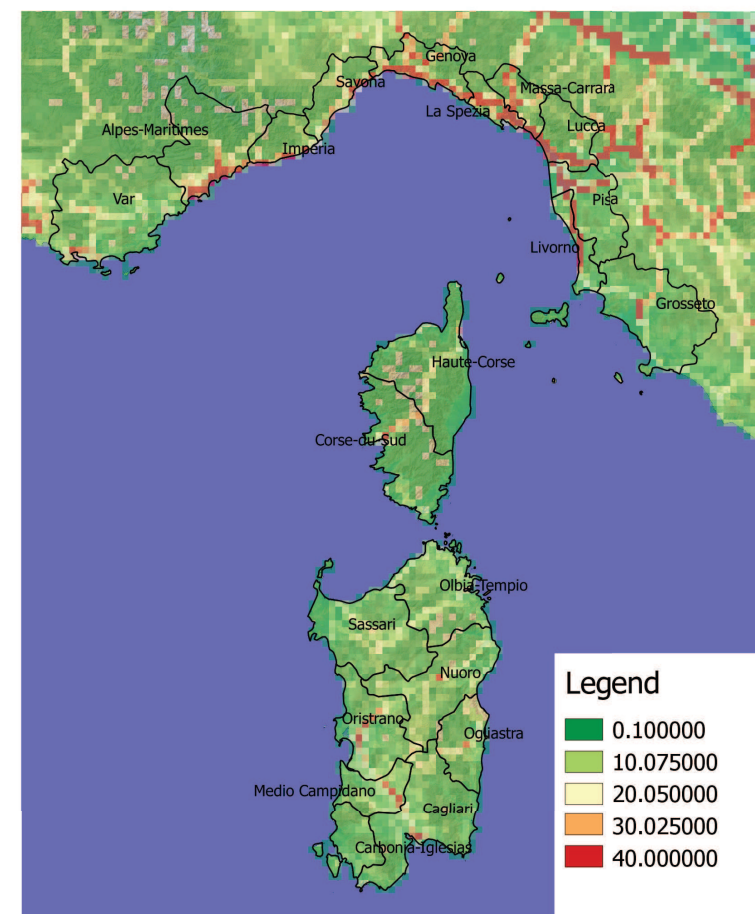
CO2 emissions from international shipping [kt/grid (5kmx5km)]



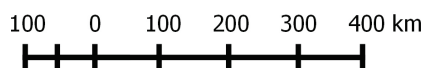
CO2 emissions from non-industrial combustion plants

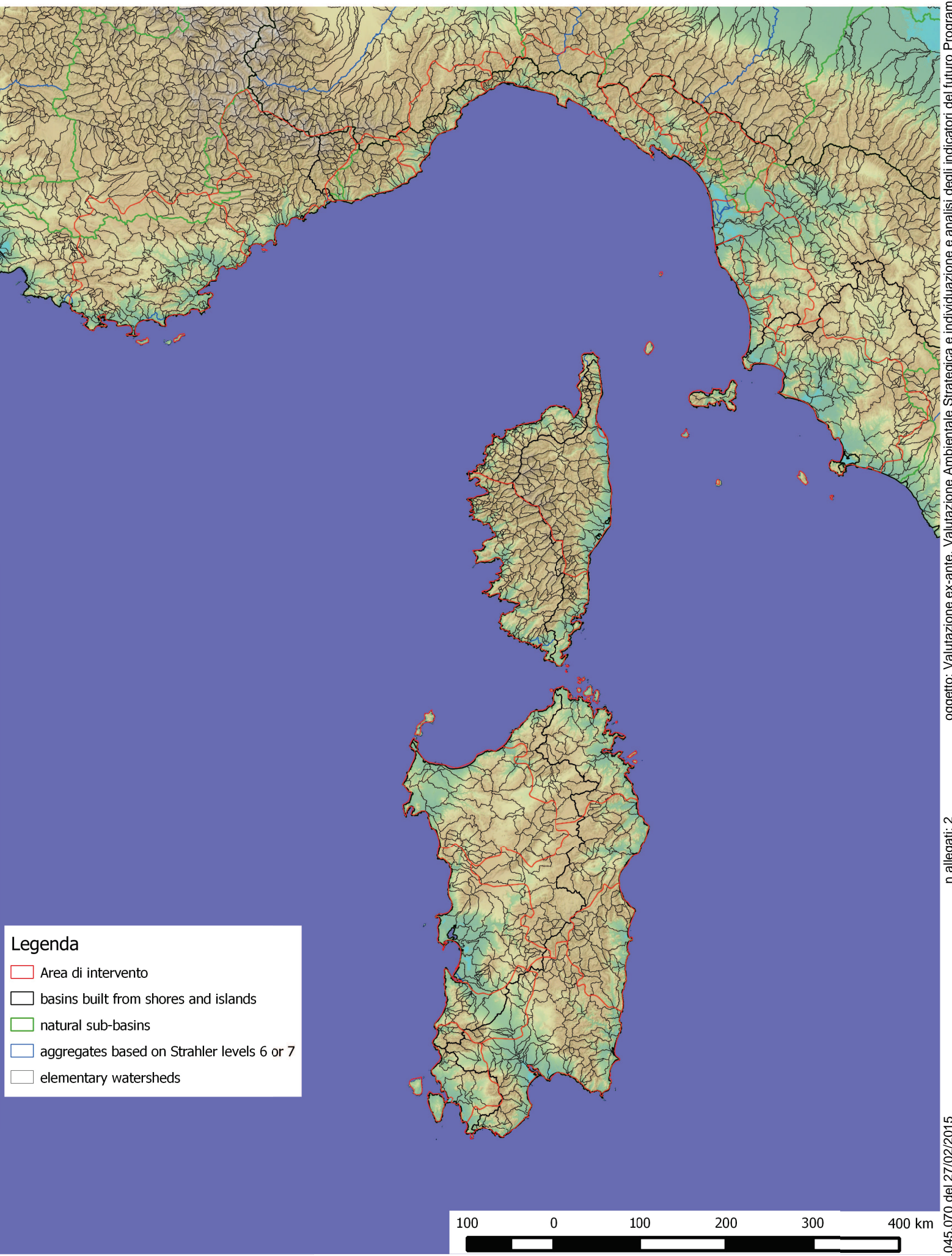


CO2 emissions from diffuse industrial releases



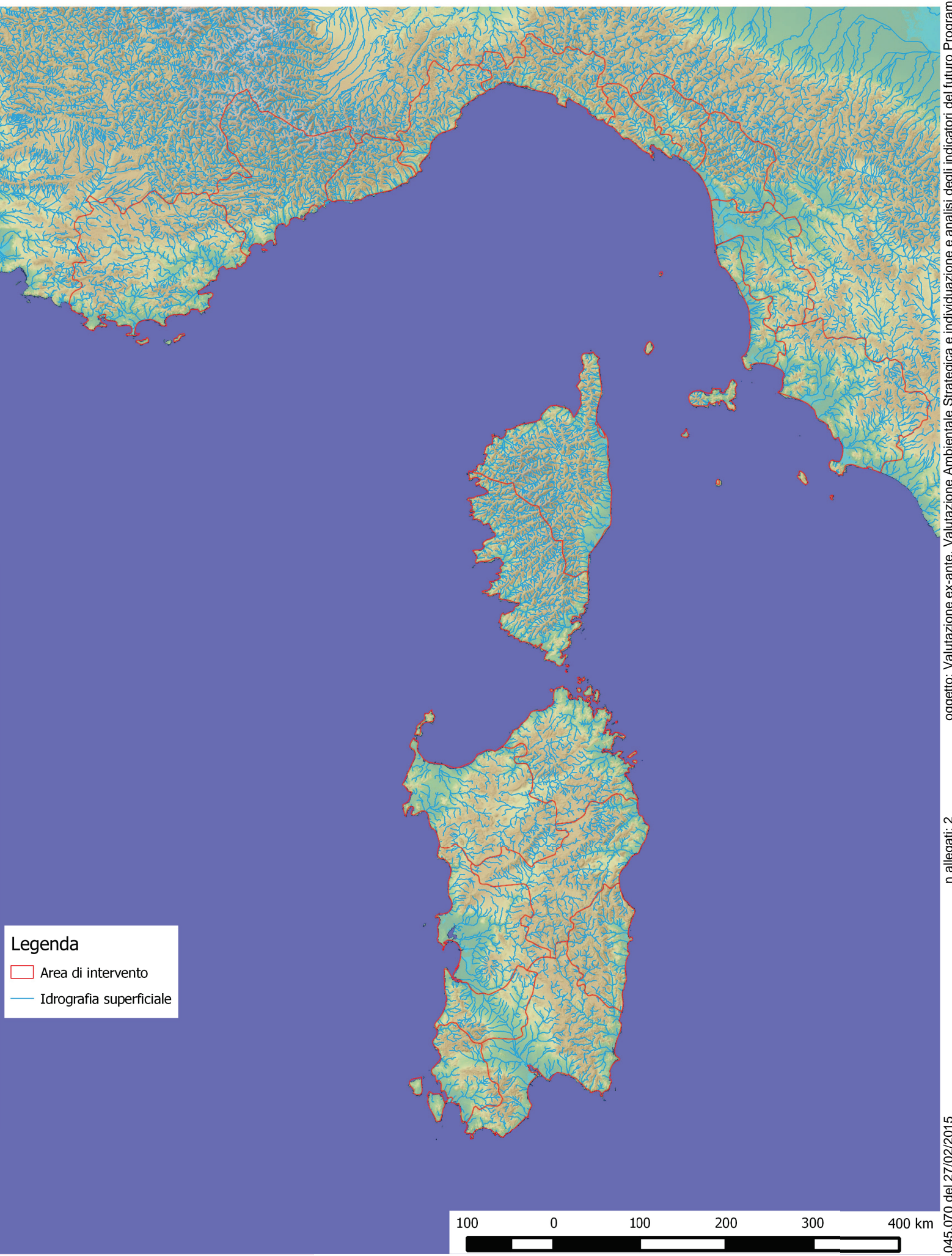
CO2 emissions from road transport





Legenda

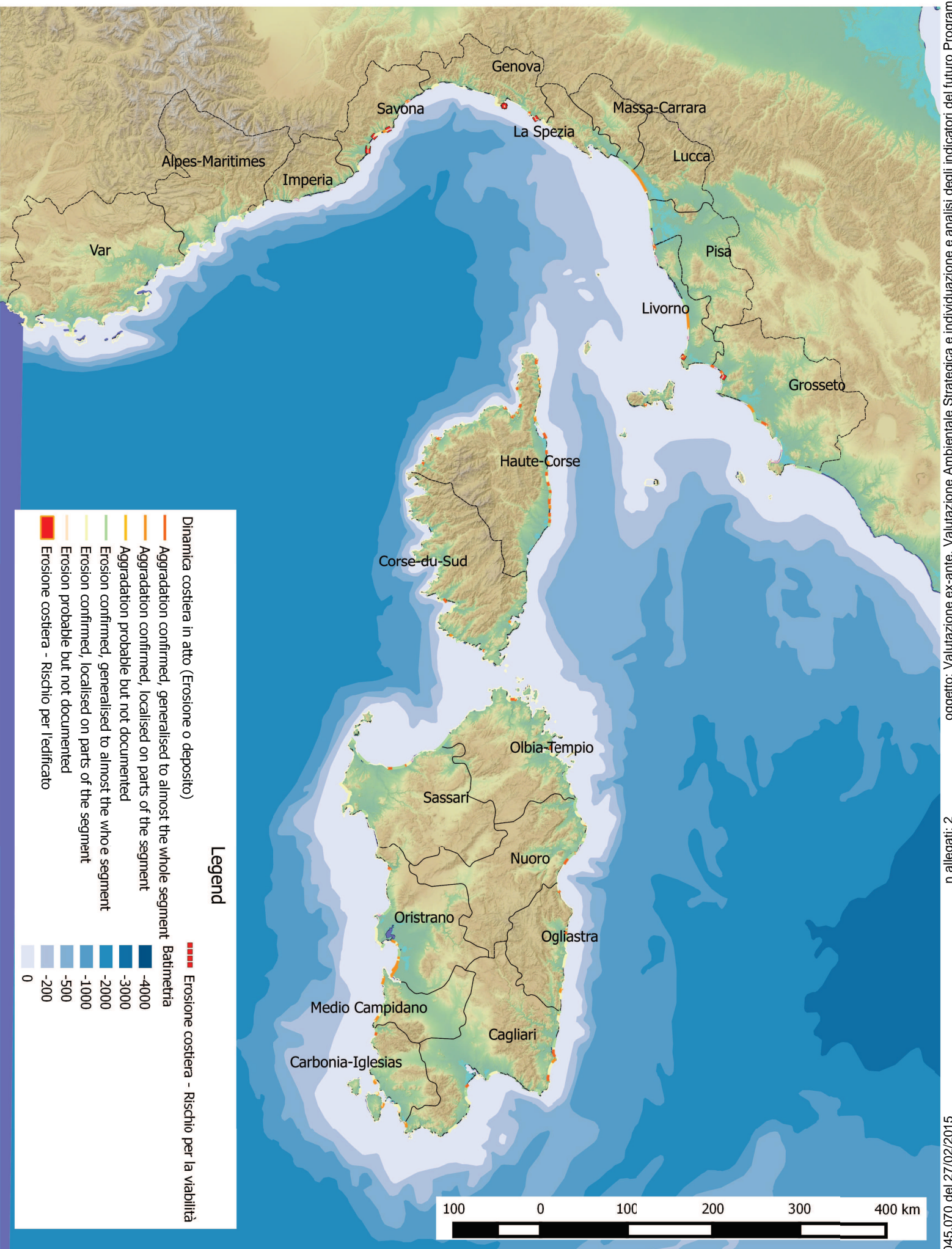
- Area di intervento
- basins built from shores and islands
- natural sub-basins
- aggregates based on Strahler levels 6 or 7
- elementary watersheds

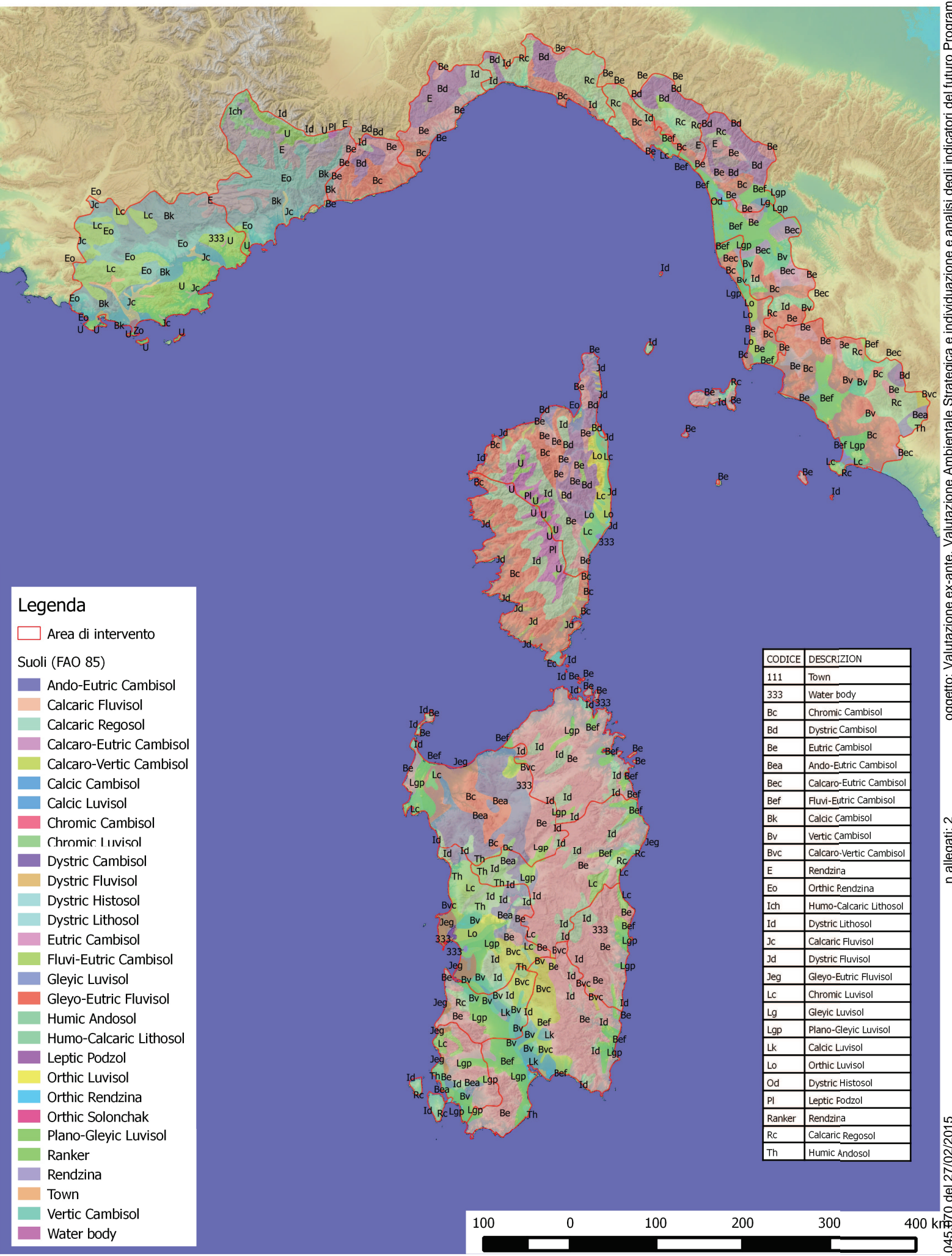


Legenda

Area di intervento

— Idrografia superficiale





Legenda

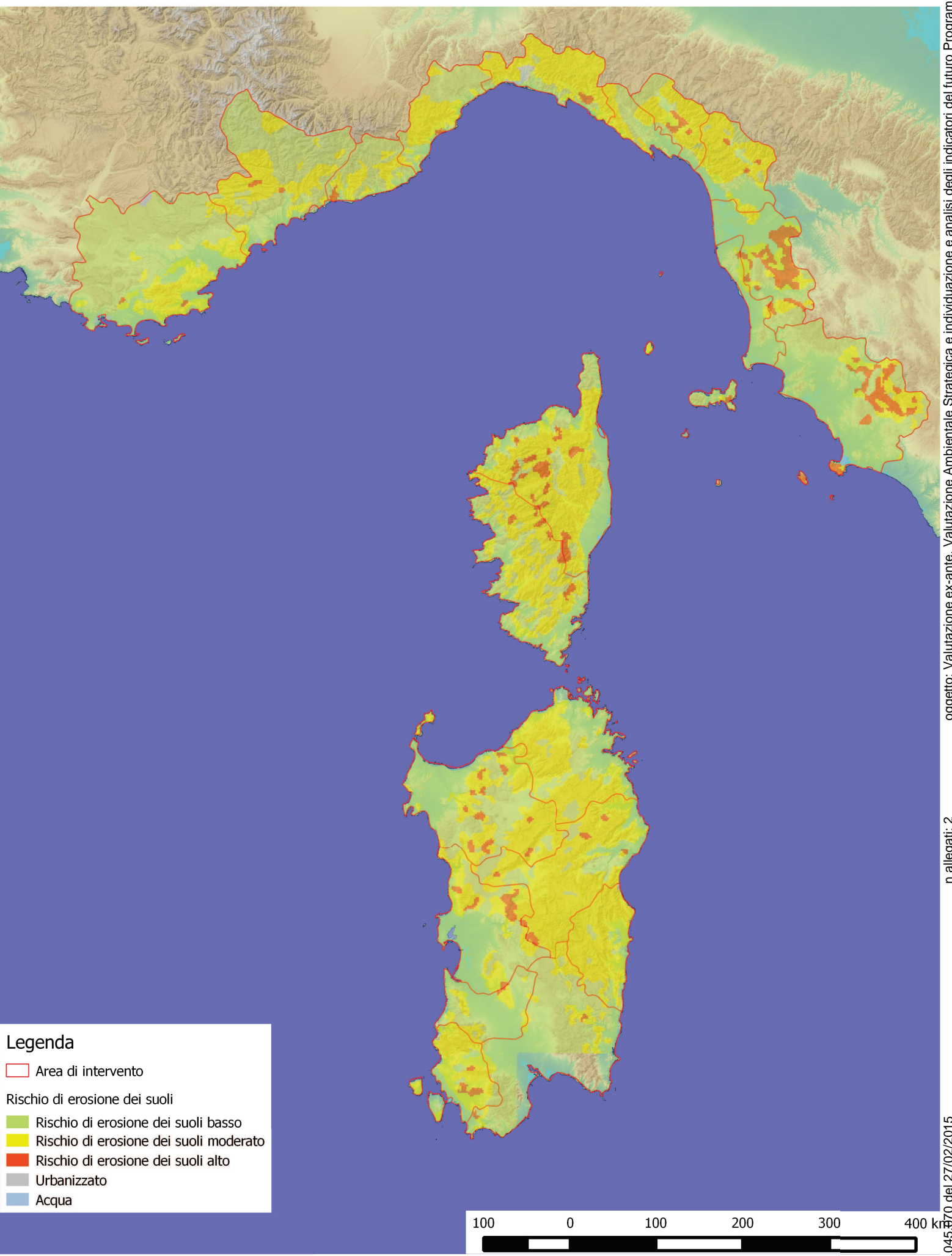
Area di intervento

Suoli (FAO 85)

- Ando-Eutric Cambisol
- Calcaric Fluvisol
- Calcaric Regosol
- Calcaro-Eutric Cambisol
- Calcaro-Vertic Cambisol
- Calcic Cambisol
- Calcic Luvisol
- Chromic Cambisol
- Chromic Luvisol
- Dystric Cambisol
- Dystric Fluvisol
- Dystric Histosol
- Dystric Lithosol
- Eutric Cambisol
- Fluvi-Eutric Cambisol
- Gleyic Luvisol
- Gleyo-Eutric Fluvisol
- Humic Andosol
- Humo-Calcaric Lithosol
- Leptic Podzol
- Orthic Luvisol
- Orthic Rendzina
- Orthic Solonchak
- Plano-Gleyic Luvisol
- Ranker
- Rendzina
- Town
- Vertic Cambisol
- Water body

CODICE	DESCRIZIONE
111	Town
333	Water body
Bc	Chromic Cambisol
Bd	Dystric Cambisol
Be	Eutric Cambisol
Bea	Ando-Eutric Cambisol
Bec	Calcaro-Eutric Cambisol
Bef	Fluvi-Eutric Cambisol
Bk	Calcic Cambisol
Bv	Vertic Cambisol
Bvc	Calcaro-Vertic Cambisol
E	Rendzina
Eo	Orthic Rendzina
Ich	Humo-Calcaric Lithosol
Id	Dystric Lithosol
Jc	Calcaric Fluvisol
Jd	Dystric Fluvisol
Jeg	Gleyo-Eutric Fluvisol
Lc	Chromic Luvisol
Lg	Gleyic Luvisol
Lgp	Plano-Gleyic Luvisol
Lk	Calcic Luvisol
Lo	Orthic Luvisol
Od	Dystric Histosol
Pl	Leptic Podzol
Ranker	Rendzina
Rc	Calcaric Regosol
Th	Humic Andosol

100 0 100 200 300 400 km

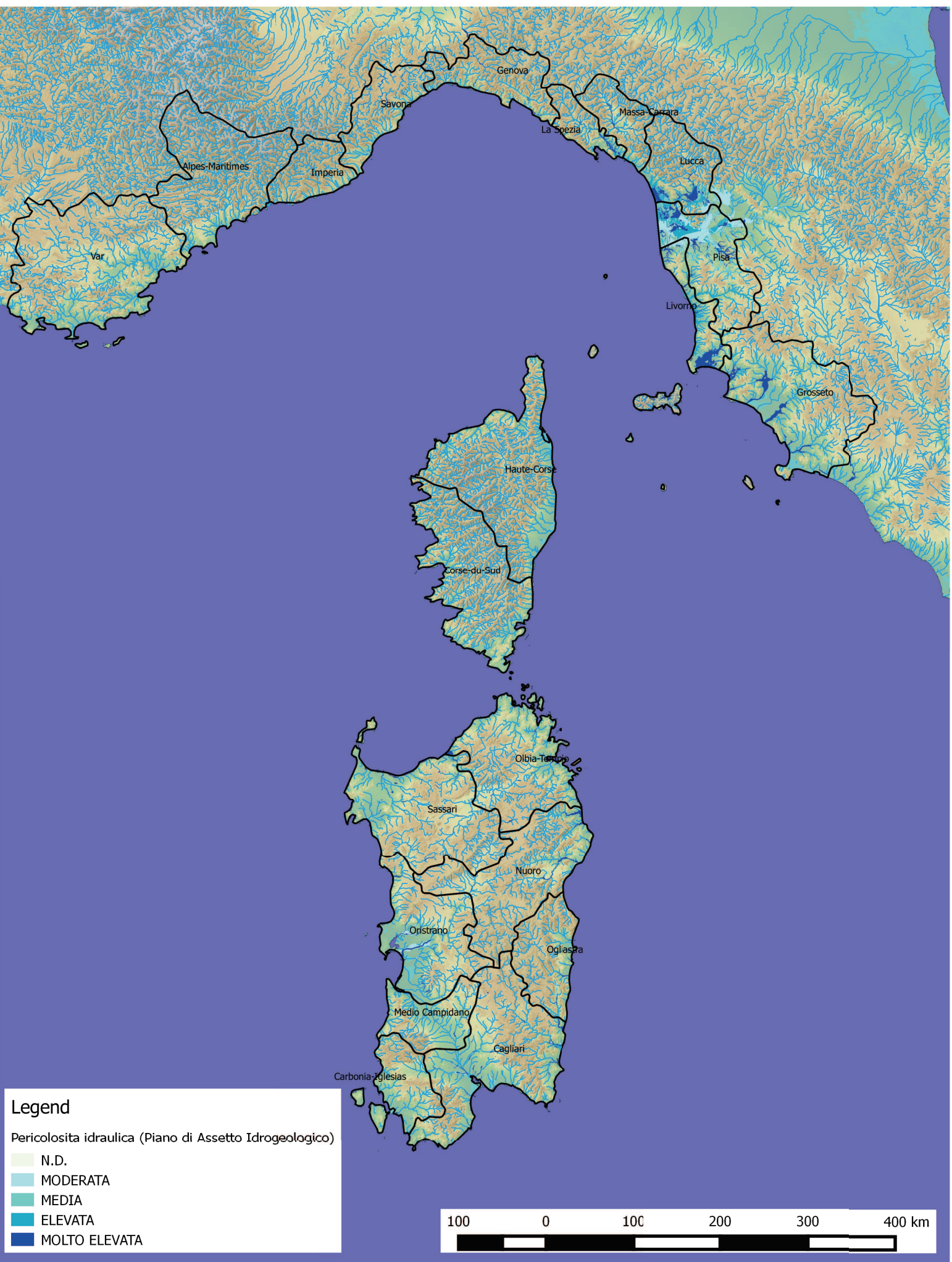


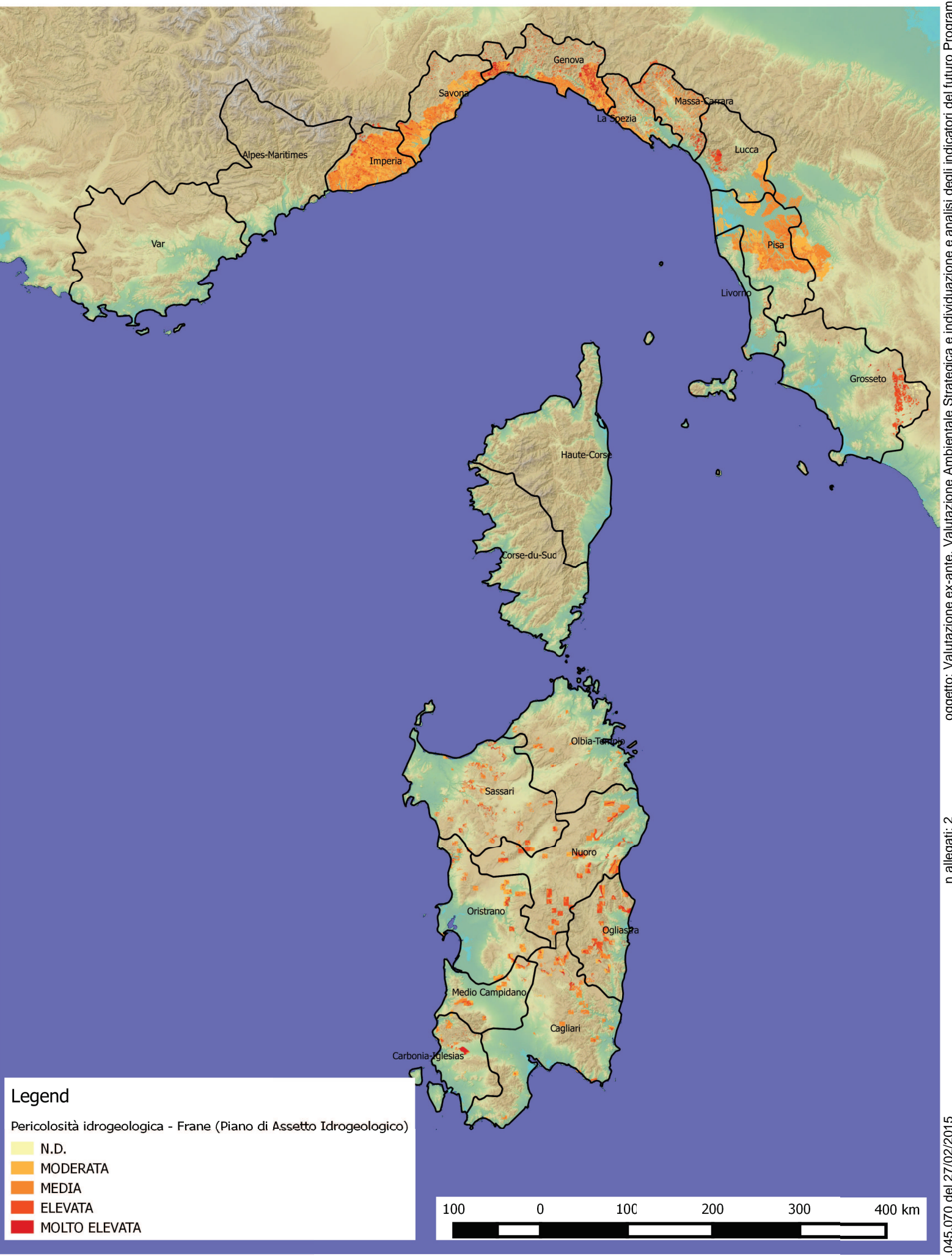
Legenda

Area di intervento

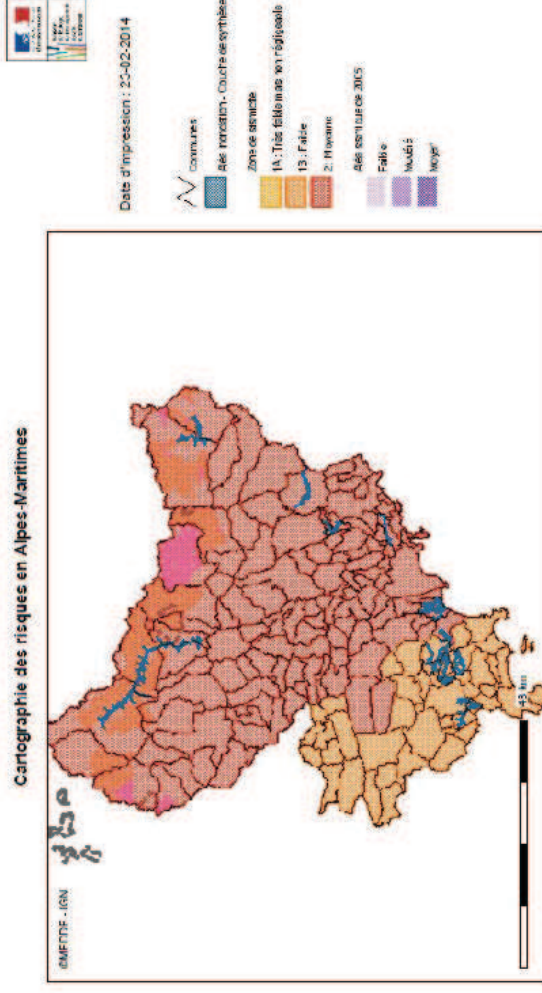
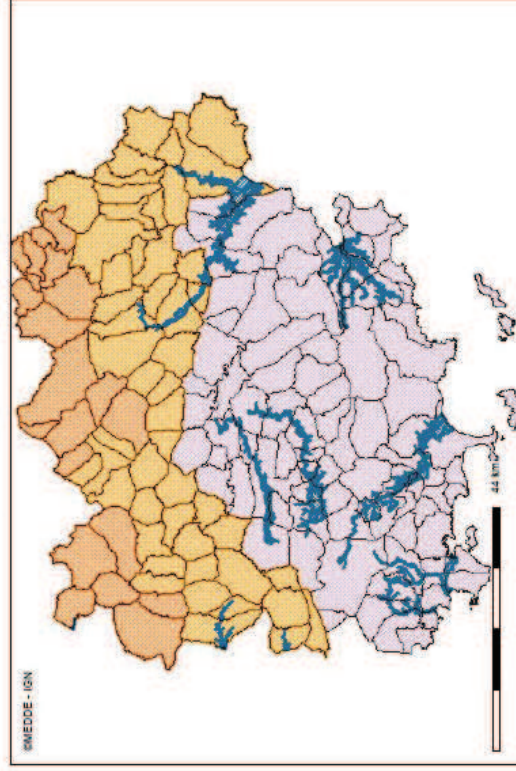
Rischio di erosione dei suoli

- Rischio di erosione dei suoli basso
- Rischio di erosione dei suoli moderato
- Rischio di erosione dei suoli alto
- Urbanizzato
- Acqua

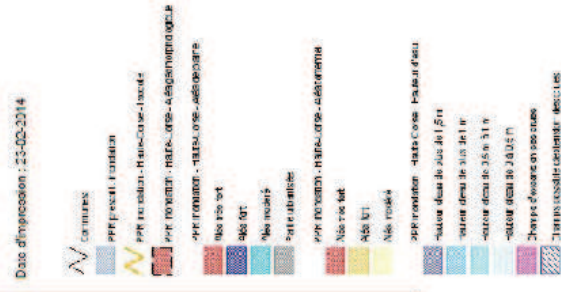
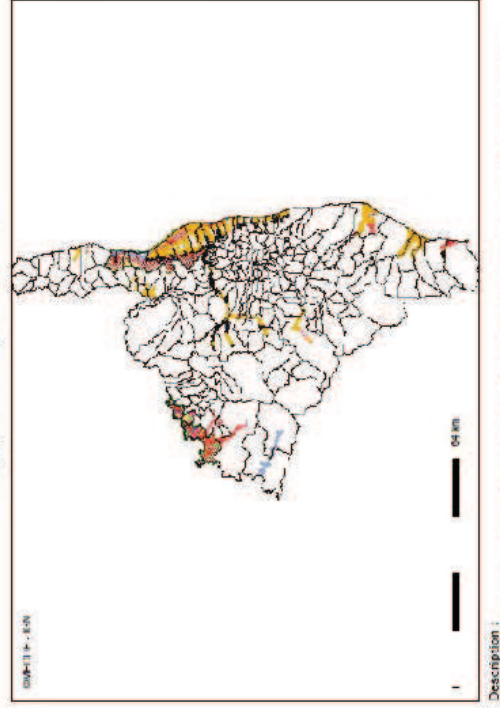




Cartographie des risques en Var



Cartographie des risques en Haute-Corse



Canopy and the rising sun in Cuzco, Peru

